

PALIT® GEFORCE RTX™ 4070 Ti



CLASSIC



GameRock Series

- One Two SYNC
- Angel ARGB with the largest RGB surface
- Patented Double-U Heat pipe design
- Triple A Die Casting Plate Kit
- TurboFan 3.0: 2-Ball Bearing
- Copper Base
- Dual BIOS (Performance / Silent Mode)
- 0-dB Technology
- Honeycomb Bracket

Minimum System Requirements

- PCI Express-compliant motherboard with one tri-width x16 graphics slot
- 750 W or greater system power supply
- One 16-pin PCIe 12VHPWR or two 8-pin supplementary power connectors
- Microsoft Windows® 11, Windows® 10 64-bit, Linux 64-bit

NV Features

- Dedicated Ray Tracing Cores
- Dedicated Tensor Cores
- NVIDIA DLSS 3
- Game Ready and NVIDIA Studio Drivers
- NVIDIA® GeForce Experience™
- NVIDIA Broadcast
- NVIDIA G-SYNC®
- NVIDIA GPU Boost™
- GDDR6X Graphics Memory
- PCI Express® Gen 4
- Microsoft DirectX® 12 Ultimate
- Vulkan RT APIs, Vulkan 1.3, OpenGL 4.6
- HDCP 2.3
- DisplayPort 1.4a, up to 4K at 240Hz or 8K at 60Hz with DSC, HDR
- As specified in HDMI 2.1a: up to 4K 240Hz or 8K 60Hz with DSC, Gaming VRR, HDR



Part Number	NED407T019K9-1046G
EAN Code	4710562243529
GPU	GeForce RTX 4070 Ti
Core Name	AD104
CUDA Core	7680
Core Clock	2310 MHz
Boost Clock	2610 MHz
DRAM Type	GDDR6X
DRAM Amount	12 GB
DRAM Interface	192 bits
DRAM Speed	21 Gbps
DRAM Bandwidth	504 GB/s
Board Power	285 W
Output	DP 1.4a x 3 HDMI 2.1a x 1
Bracket	2 slot
Cooler	3.2 slot
Board size	313.9 x 137.0 x 65.1 mm
Box size	400 x 235 x 105 mm
Retail Pack	5 pcs per carton
Box including	<ul style="list-style-type: none"> ➢ GeForce RTX 4070 Ti ➢ Power Cable ➢ ARGB SYNC Cable ➢ VGA Holder

Product Specifications and Features are for reference only and are subject to change without prior notice.



GEFORCE RTX™ 4070 Ti



ONE TWO SYNC

No need of any software control, the board lighting can be easily synced with any other ARGB-supported devices with just a single cable.



Angel ARGB

The crystalline cuts on GameRock cooler bring you the splendid angel lighting.



The Dazzling Angel



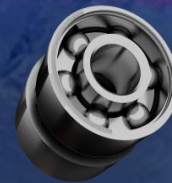
Triple A Die Casting Plate Kit

Two die casting molded "Aluminum Alloy Armor" plates fully cover the circuit board and directly attach to all the hot spots on PCB.



Double U Heat Pipe

The patented Double-U Heat Pipes increases 20% more heat dissipation area for best thermal performance.



Two-Ball Bearing

- IP5X dust resistant technology
- Lower fan vibration
- Prolonged fan life expectancy



0-dB TECH

Keep Silent while experiencing the multimedia application and general workload.



DrMOS

DrMOS offers high current circuits, low noise operation, and effective reduction of heat generating.



Dual BIOS

BIOS 1: Performance Mode
BIOS 2: Silent Mode

