



# Alpine 12 LP

## Low Profile Intel CPU Cooler

- Improved performance by new production process
- Designed especially for use in HTPCs and Mini-ITX cases
- Wide RPM Range
- Extended life span thanks to low coil temperature
- Pre-applied MX-2 thermal paste
- Easy and tool-free installation



# Alpine 12 LP

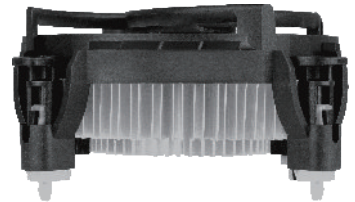
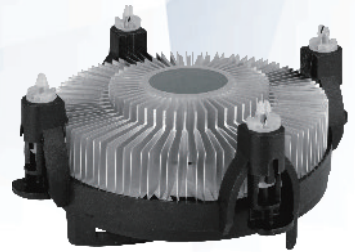
## Low Profile Intel CPU Cooler

The ARCTIC **Alpine 12 LP** is a low profile cooling solution for Intel® CPU Socket 1200, 115X and recommended for CPU with a TDP up to 75 W.

An installation height of just 42.2 mm makes it especially compatible with HTPC and Mini-ITX cases.

A new production process of the extruded radial heatsink improves the cooling performance.

With high-quality bearings and a newly developed motor, the fan is very quiet, efficient and durable.

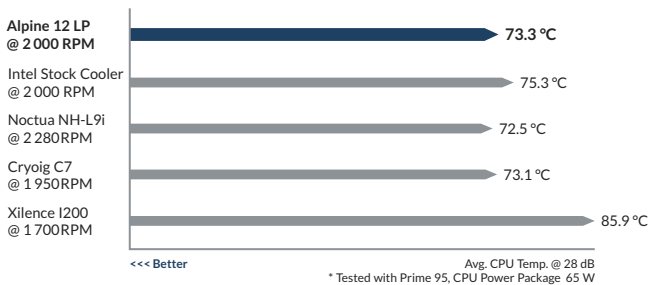


Specifications	
Heatsink	Radial Heatsink
Material	Aluminium
Thermal Compound	Pre-applied MX-2
Fan	92 mm, 100 - 2 700 RPM (Controlled by PWM)
Bearing	Fluid Dynamic Bearing
Noise Level (at max. RPM)	0.3 Sone
Current/ Voltage	0.06 A/12 V
Recommended for TDP up to	75 W
Dimensions*	95 (L) x 95 (W) x 53.3 (H) mm
Weight	182 g
Socket Compatibility	Intel® 1200, 115X

\* Installation height: 43 mm

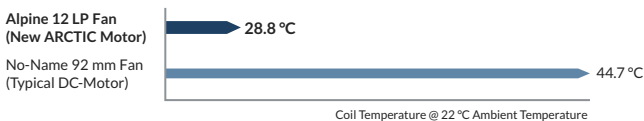
### Top-Notch Price-Performance Ratio

Thanks to its radial heat sink and good fan design, the Alpine 12 LP offers a lot of performance at a very low price point. In internal tests leveled to 28 dB, the cooling performance of the Alpine 12 LP was on par with competition while offering a much smaller footprint at a more affordable price.\*



### Extended Life Span

A 10 °C lower motor temperature roughly doubles the life span of a fan. The new ARCTIC motor has a four times longer service life through its low coil temperature.

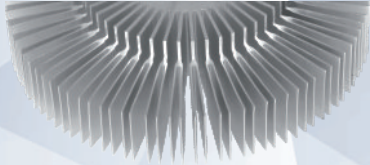


# Alpine 12 LP

## Low Profile Intel CPU Cooler

### Improved Cooling Performance by New Production Process

The high thermal conductivity of aluminum is fully retained by a new type of extrusion. This new production process creates a powerful yet very compact radial heat sink. The particularly thin cooling fins of the new Alpine are fanned out in a Y-shape. This increases the surface area of the heat sink and therefore the cooling capacity.



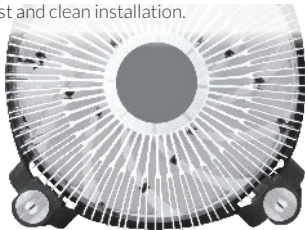
### Wide RPM Range

The Alpine 12 series features a new motor technology with a very wide, PWM-controlled RPM range. This keeps the noise level at a minimum while guaranteeing maximum cooling performance when needed.



### Pre-applied MX-2 thermal paste

The pre-applied, high-performance MX-2 thermal compound ensures fast and clean installation.



### Easy and tool-free installation

Thanks to the push pins, the installation is really easy. Additional tools are not needed to install the cooler.



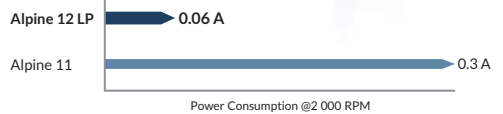
### Designed especially for use in HTPCs and Mini-ITX cases

With an installation height of only 42.2 mm, the Alpine 12 LP is particularly suitable for small and narrow housings. It is easy to assemble and allows full access to all components close to the CPU. The compact Top-Blower CPU cooler also cools areas around the CPU socket and is predestined for HTPC and Mini-ITX cases.



### Lower Power Consumption & Minimum Vibration

The new Alpine 12 LP is powered by an updated motor and runs much more efficiently than its predecessors. Due to sinus-magnetizing the new motor creates just 5% of the commutation oscillations of a regular DC-motor. These factors contribute towards saving energy, lowering the coil temperature and reducing vibrations to a minimum without compromising performance.



### High Quality Bearing

Thanks to an alloy/lubricant combination developed in Germany, friction within the bearing is reduced and greater efficiency is achieved.

As a result, there is less heat development as well as less bearing noise, which means you can enjoy a longer service life from your fan.

