



NX500M

Mini Tower M-ATX Gaming Case



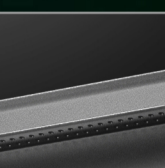
UNIQUE DESIGN & POWERFUL HEAT DISSIPATION

The NX500M features a unique design and excellent cooling performance. The half-view tempered glass side panel design allows you to show off your gaming configurations without any obstacles. 6 x 120mm fans can be installed simultaneously.



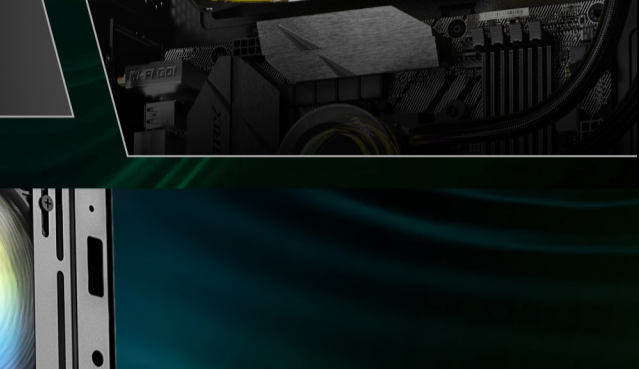
SLEEK DESIGN WITH MASSIVE AIR INTAKE

The sleek and elegant exterior design provides ample airflow to your system for maximum cooling while ensuring minimal dust intake. The panel comes equipped with a Type-C port for added convenience in use.



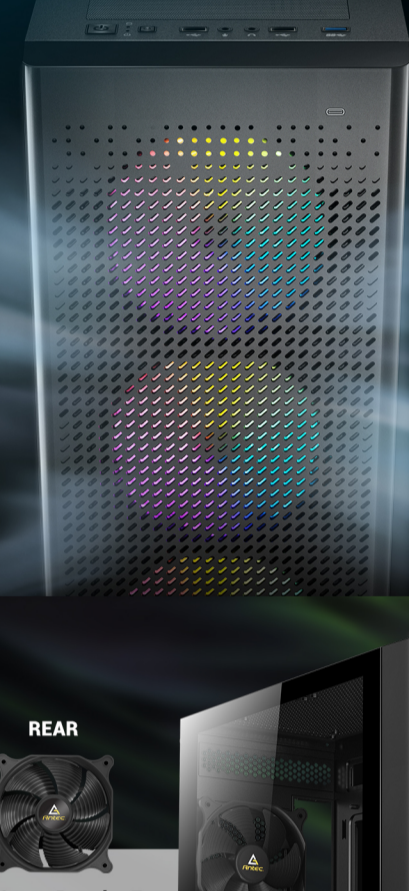
POWERFUL COOLING

Supports a 360mm (Length \leq 397mm) Radiator at the front and a 240mm radiator at the top.



POWERFUL FAN COMPATIBILITY

Supports 3 x 120mm fans at the front.



HIGH-AIRFLOW MESH FRONT PANEL

Massive air intake at the front provides ample airflow.



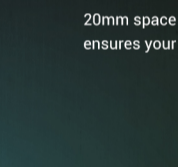
1 x 120mm Regular Fan

PRE-INSTALLED 1 X 120MM FAN

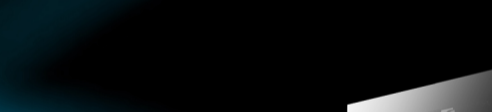


I/O PANEL

Power, Reset, Type-C 3.2 Gen 2 x 1, USB3.0 x 1, USB2.0 x 2, MIC/HD-AUDIO



Type-C 3.2 Gen 2



NEAT BUILD WITHIN REACH

20mm space for cable management ensures your PC build looks neat.

TEMPERED GLASS SIDE PANEL

Showcase your personalized hardware and custom water-cooling system.

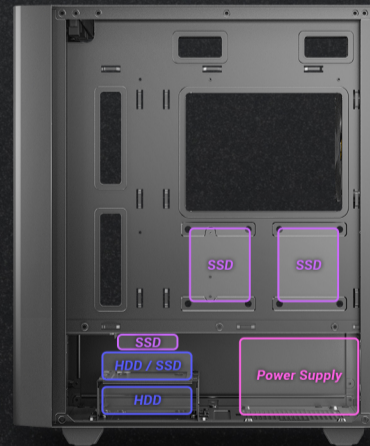
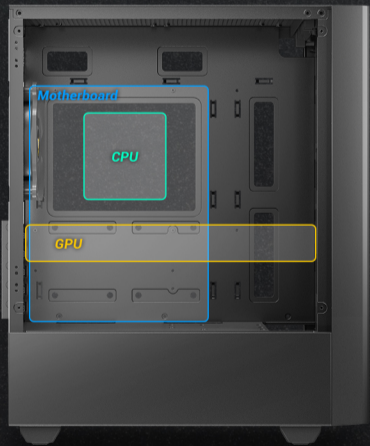


UP TO 6 X 120MM FANS SIMULTANEOUSLY



COMPATIBILITY

- Motherboard support: Micro-ATX, ITX
- CPU cooler max height: \leq 155mm
- GPU max length: \leq 300mm (with front fan) / \leq 320mm (without front fan)
- 2.5" / 3.5"/2.5" Drive Mounts: 2 / 2
- Power Supply max length: \leq 165mm (with HDD) / \leq 325mm (without HDD)



UNLIMITED PERFORMANCE

Max. GPU Length : 320mm (Fans are installed at the exterior)



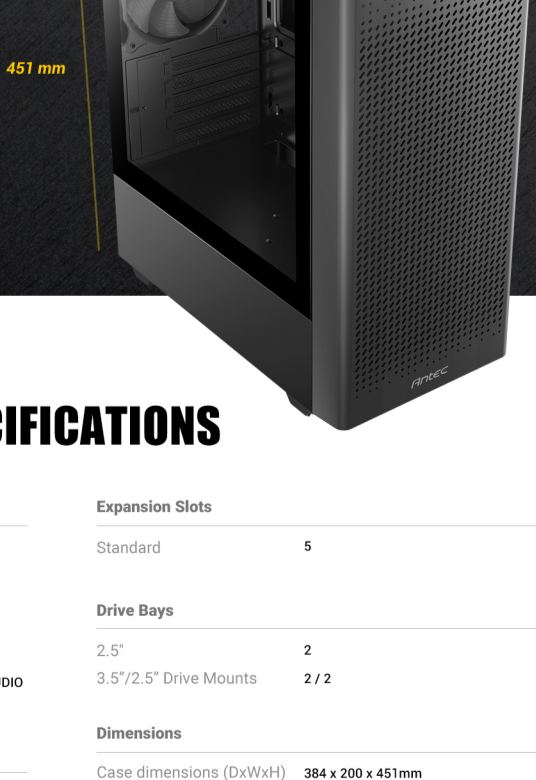
REMOVABLE HDD DRIVE CAGE

The HDD drive cage is removable to increase PSU installation space. With the drive cage installed, the PSU compartment can accommodate PSUs up to 165mm in length. With the drive cage removed, the PSU compartment can accommodate PSUs up to 325mm in length.



DIMENSIONS

384 x 200 x 451 mm (DWH)



SPECIFICATIONS

Main Spec		Expansion Slots	
Motherboard Support	Micro-ATX, ITX	Standard	5
Form Factor	Mini Tower	Drive Bays	
Case Material	Steel + Plastic	2.5"	2
Side Window Material	Tempered Glass	3.5"/2.5" Drive Mounts	2 / 2
I/O Ports	Power, Reset, Type-C 3.2 Gen 2 x 1, USB3.0 x 1, USB2.0 x 2, MIC/HD-AUDIO	Dimensions	
Compatibility & Clearances		Case dimensions (DxWxH)	384 x 200 x 451mm
CPU Cooler Max Height	\leq 155mm	Net weight	3.7kgs
GPU Max Length	\leq 300mm (with front fan) / \leq 320mm (without front fan)	Gross weight	4.45kgs
Power Supply Max Length	\leq 165mm (with HDD) / \leq 325mm (without HDD)	Accessories	
Cable Routing Space	\leq 20mm	Included Fans	1 x 120mm fan in rear
Fan Support		General	
Front	3 x 120mm / 2 x 140mm	Dust Filter	Top / Bottom
Top	2 x 120mm / 2 x 140mm	Warranty	1 year
Rear	1 x 120mm	UPC#	0-761345-81056-2
Radiator Support			
Front	120 / 140 / 240 / 280 / 360 (Lengths: 397mm)mm		
Top	120 / 240mm		
Rear	Up to 120mm		

